

# ELAN 30s

## Transforming ELISA Workflows



**Safe Blood**

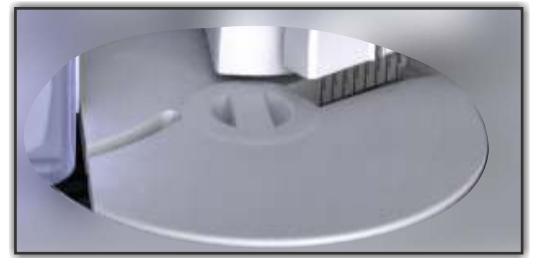
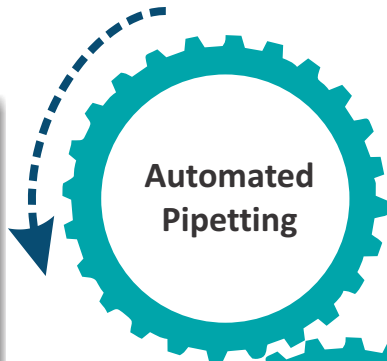
Fully automated  
Microstrip ELISA Processor



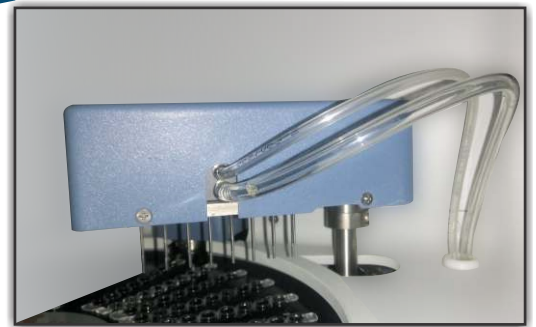
# Complete Automated Solution for ELISA Workflow Management



Robotic Probe



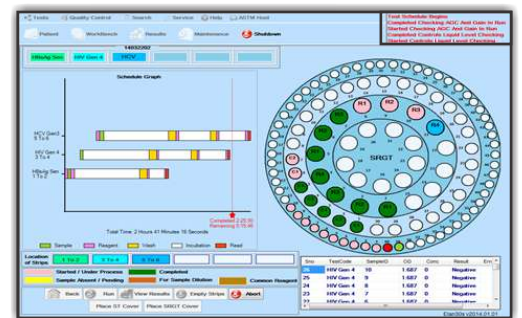
Inbuilt Incubator / Shaker



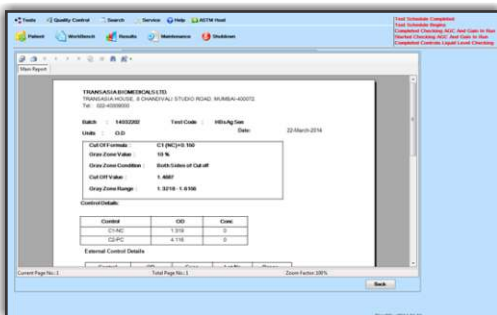
8 channels for aspiration & dispense



Movable Static Photometer Reader



Ease of operation



Test Report



## ELAN 30s

### Fully Automated microstrip ELISA processor

- Compact Bench Top model for ELISA work flow management
- Upto six different tests can be performed at a time
- Auto self-check mode, liquid level detection and dispense monitoring
- Single probe for dispensing samples and reagents (probe optional)
- Inbuilt ambient temperature enclosed incubator and shaker
- Automated well-washing performed at customized volumes and cycles
- Built-in ELISA reader: single and dual wavelength reading option for complete automated ELISA processing
- 30 x 8 (240) microwell locations - 2 ½ ELISA microwell plate
- 8 manifold washer dedicated needles for aspiration and dispensation to avoid cross-contamination.
- QC reports - L-J chart/ CV evolution/ OD evolution/ Conc. evolution
- 59 sample locations (Sample + Pre-dilute)  
Ideal for 35 samples for testing 3 different parameters
- User-friendly software guided ELISA process
- 24 reagent locations for 20ml - option for loading reagents in test tubes & common reagent position
- 30 Calibrator / Control loading locations
- Bio-hazardous waste disposable unit

# ELAN 30s User-friendly software for operational excellence

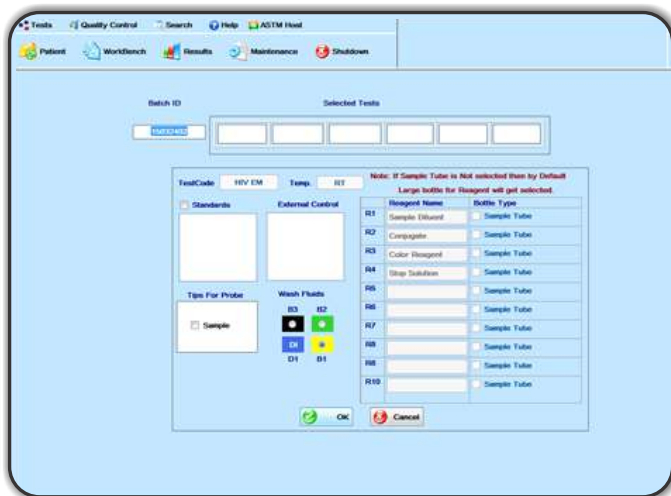
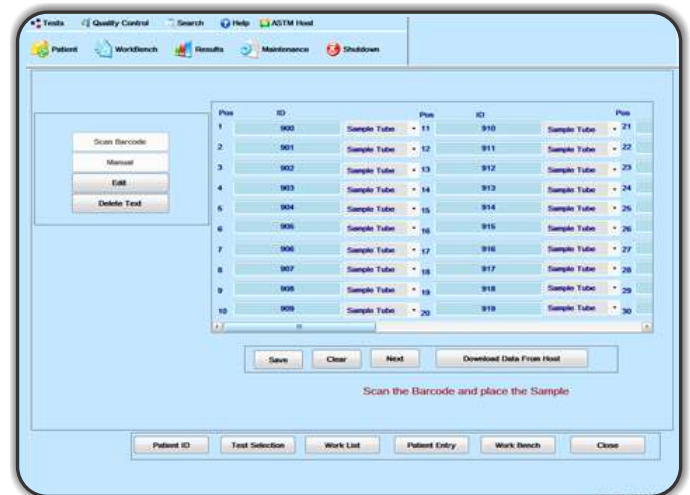
## Patient / Test Programing

Patient identification detail entry

Use of sample position 41 to 58 for reagents in tubes

Handheld barcode scanner

Test selection for samples- single/multiple



## Work Bench

Reagent in test tube & wash buffer bottle selection

Test selection for batch & common reagent positioning

Quality control with QC data and validation criteria

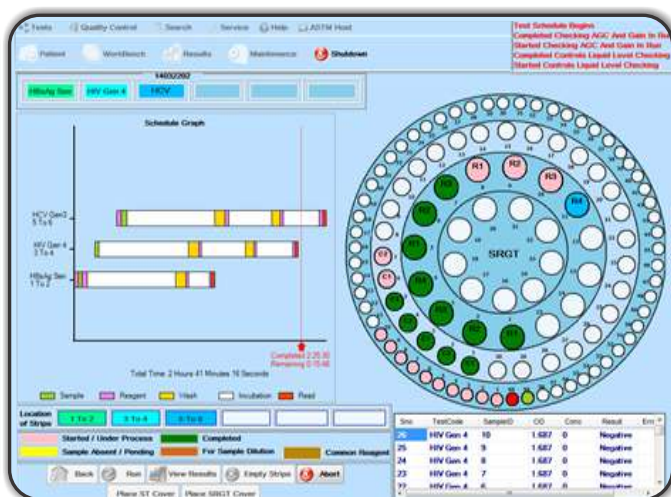
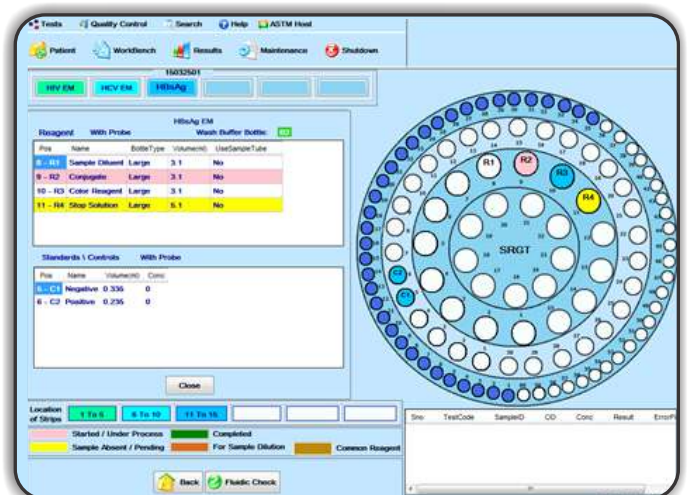
## Reagent Positions in Reagent Tray

Reagent layout

Test details

Fluid check

Online instrument activity can be viewed on the screen



## Test Process Window

Run start, Batch Progress Bar – Timeline

Test - Time bar

Report window showing results after the completion of each test

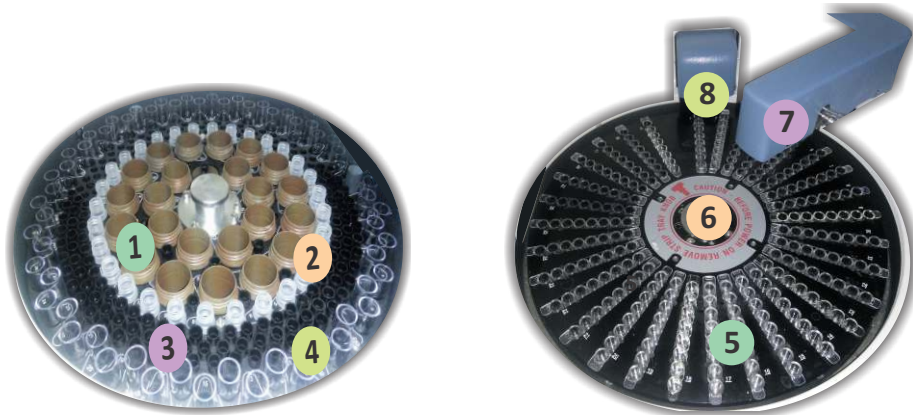
View results-Online, Table wise, strip wise

Easy maintenance

FILL-T-T



SITS-T-T



- |                                 |                          |
|---------------------------------|--------------------------|
| 1 Reagents Location             | 6 Incubator Plate        |
| 2 Control / Calibrator Location | 7 ELISA Washer           |
| 3 Carbonated Tips               | 8 ELISA Reader           |
| 4 Sample Location               | 9 Robotic Dispensing Arm |
| 5 Microwell ELISA Strip         | 10 Wash Buffer Bottles   |

FORGET-T-T

## ELAN 30s

Compact bench top - Open system with wide test menu for ELISA

Operational Ease for ELISA- HIV, HBsAg & HCV.

- Hormones
- Fertility
- Cancer markers
- Syphilis ELISA
- Autoimmune disease
- Hepatic markers
- Infectious disease
- Dengue / Leptospira ELISA

# TECHNICAL SPECIFICATIONS

## Physical Specifications

### Dimensions

Length:	1058mm	3.5ft
Breadth:	520mm	1.8ft
Height:	533mm	1.8ft
Weight:	65kgs	
Shipping weight:	95kgs	

### Power Supply

Voltage:	AC 110 – 240 V
Frequency:	50 Hz / 60 Hz
Power consumption:	300 W

### General Specifications

Self-check at startup:	Yes
Assay per batch:	Up to 6 test
Number of strips:	30 × 8 = 240 micro wells
Sample tube size:	12 mm × 75 mm (5ml)
Reagent bottle:	24 × 20 ml
Controls & Calibrators:	30 × 1.5 ml
Location:	41 to 58 can be used for loading reagents in 5mL test tube
Sample dilution:	In test tubes
Tips capacity:	204 tips

### Reader Specifications

Dynamic range:	0.0 - 4.0 O.D
Wavelength range:	400 - 800 nm
Filter slots:	405 nm, 450 nm, 492 nm & 630 nm 3 open positions
Reading mode:	Single & Dual
Reading time:	20 sec per strip for single wavelength
Precision:	< 1% C.V at 0.5 to 2.0 O.D
Accuracy:	± 1 or 2.5% (0.000 to 3.00) whichever is greater

### Washer Specifications

Manifold configuration:	8 for aspiration & 8 for dispensing
Wash cycle:	1 to 9 (repeatable)
Residual volume:	< 6 µl
Wash buffer capacity:	1 × 4L & 2 × 1L
DW Can:	1 X 20L
Low buffer alarm:	Yes
Soak time:	20 to 60 sec
Dispense pressure:	Pre-set
Rinse function:	Yes
Waste Can:	1 × 20L

## Incubator Specifications

Temperature range:	37°C or R.T
Temperature accuracy:	± 1°C across plate @37°C
Shaker facility:	Yes
Incubator time:	Programmable
Time to set temperature:	< 5 min
Temperature monitoring:	Yes

## Pipetting Specifications

Dispensing mode:	Fixed needle or Disposable tips
Sample tips range:	300 µl (5-200 µl)
Reagent tip range:	300 µl (10-200 µl)
Precision sample tip:	< 3% CV at any operating volume above 10 µl < 2% CV at 100 µl
Precision reagent tip:	< 1% CV at 100 µl

## Process Security

Liquid level sensing:	Yes
Level sensor system:	Conductive
Clot detection:	Yes
Tip detection:	Yes
Alarms:	Yes

## Software

Computer include:	Desktop PC running TBM O.S (Windows based)
Controlling software:	ELAN 30s
Work protocols(assay):	Unlimited
Data Processing:	Quantitative & Qualitative
Levey-Jennings:	Yes
West guard rules:	Yes
Process reporting:	Event log + error log
Automatic error recovery:	Yes
Password access control:	Yes

## Consumables

Probe clean solution :	XL Wash
Carbonated disposable tips:	Sample tips Reagent tips

All attributes & Specifications presented here in are subject to change without prior notification.

To place orders:

 1800 103 8226

## ERBA Diagnostics Mannheim GmbH

Mallaustrasse 69-73 68219 Mannheim, Germany  
Telephone : (+49) 621 8799770 Fax : (+49) 621 8799688  
Email : sales@erbamannheim.com Website : www.erbamannheim.com

## TRANSASIA BIO-MEDICALS LTD.

Transasia House, 8 Chandivali Studio Road, Andheri (E), Mumbai - 400 072  
Tel.: (022) 4030 9000, Fax : (022) 2857 3030  
Email : responses@transasia.co.in

Stay connected:     

www.erbamannheim.com

